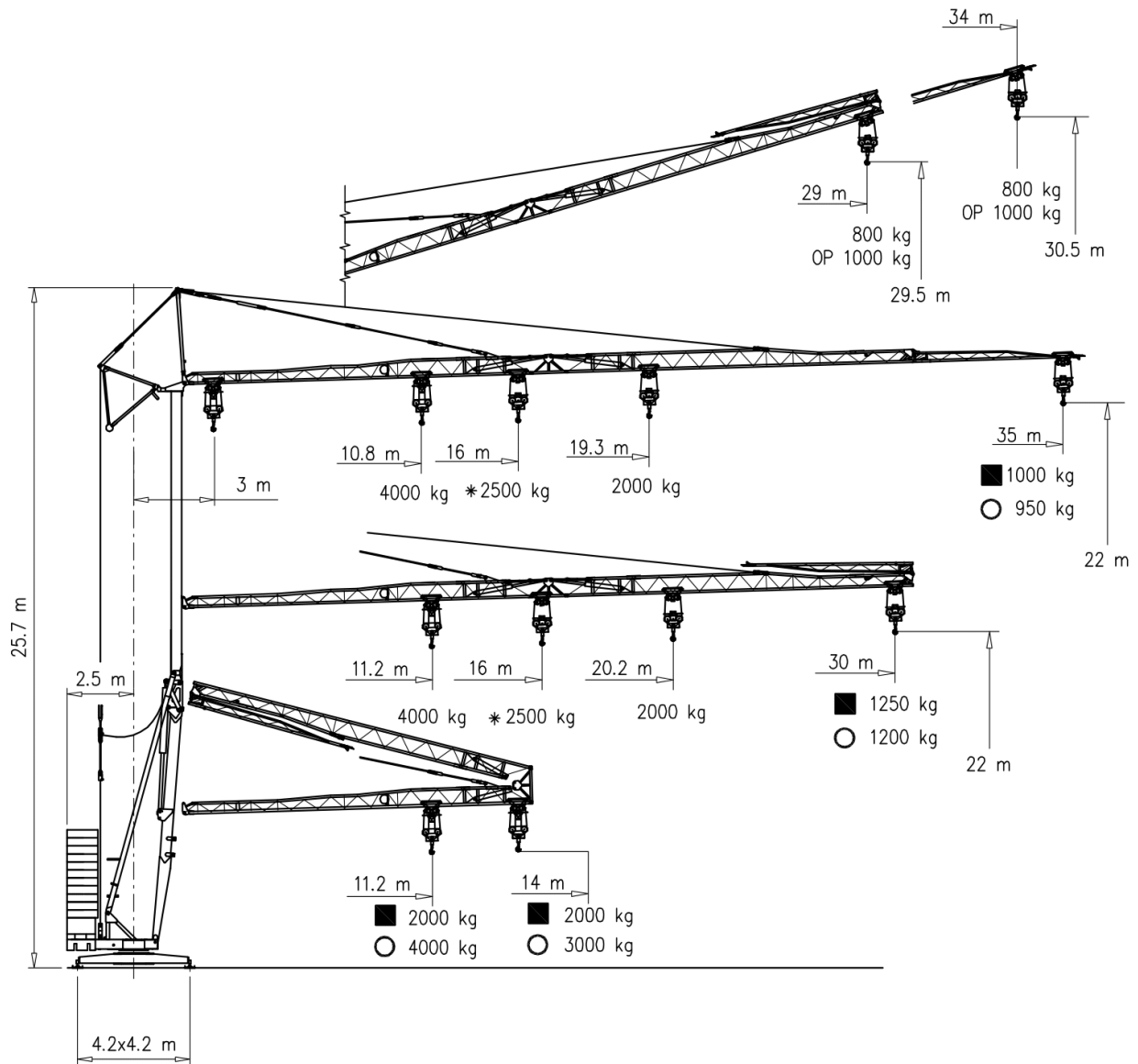


AFM Gru

1035 RVI



■ 
 ○ 
 * V15.45

GRU A MONTAGGIO RAPIDO
 GRUE A MONTAGE RAPIDE
 GRUA DE RAPIDO MONTAJE
 GRUA DE MONTAGEM RAPIDA
 QUICK SELFERECTING CRANE
 HYDRAULISCHER SCHNELLMONTAGEKRAN


 DIN H1 - B3

заказать:


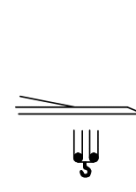
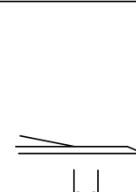



+7 (495) 925-97-64

peinerkran.ru

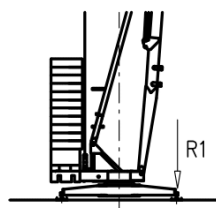
AFM Gru

1035 RB1

Curve di carico – Courbes de charges – Load diagrams – LastKurven – Curvas de cargas

	3 800	29 800	34 800	m kg	OP	3 1000	29 1000	34 1000	m kg						
	3 4000	10.8 4000	12 3480	14 2880	16 2440	18 2110	20 1860	22 1650	24 1490	26 1350	28 1230	30 1130	32 1040	35 950	m kg
	3 2000	19.3 2000	20 1910	22 1700	24 1540	26 1400	28 1280	30 1180	32 1090	35 1000	m kg				
	3 2500	16 2500	18 2110	20 1910	22 1700	24 1540	26 1400	28 1280	30 1180	32 1090	35 1000	m kg			
	3 4000	11.2 4000	14 3000	m kg		3 2000	14 2000	m kg							

Reazioni – Reactions – Réactions – Eckdrücke – Reacciones – Reações



R1 ● 25 t ■ 17.5 t
▲ 15 t ○ 26.52 t

- | | | |
|-------------------------------|---------------------------------------|--------------------------------------|
| ● Reazioni in servizio | ● Reactions in service | ● Réactions en service |
| ■ Reazioni fuori servizio | ■ Reactions out of service | ■ Réactions hors service |
| ▲ Peso della gru senza assali | ▲ Dead weight without transport axles | ▲ Poids de construction sans essieux |
| ○ Peso zavorra rotante | ○ Ballast weight | ○ Poids du lest |
-
- | | | |
|--|--|---|
| ● Reaktionskräfte in betrieb | ● Reacciones en servicio | ● Em serviço |
| ■ Reaktionskräfte außer betrieb | ■ Reacciones fuera de servicio | ■ Fora de serviço |
| ▲ Konstruktionsgewicht ohne transportachse | ▲ Peso de la grua sin tren de transporte | ▲ Peso de la grua sem carro de transporte |
| ○ Ballastgewicht | ○ Peso de lastre | ○ Peso de lastre rotativo |

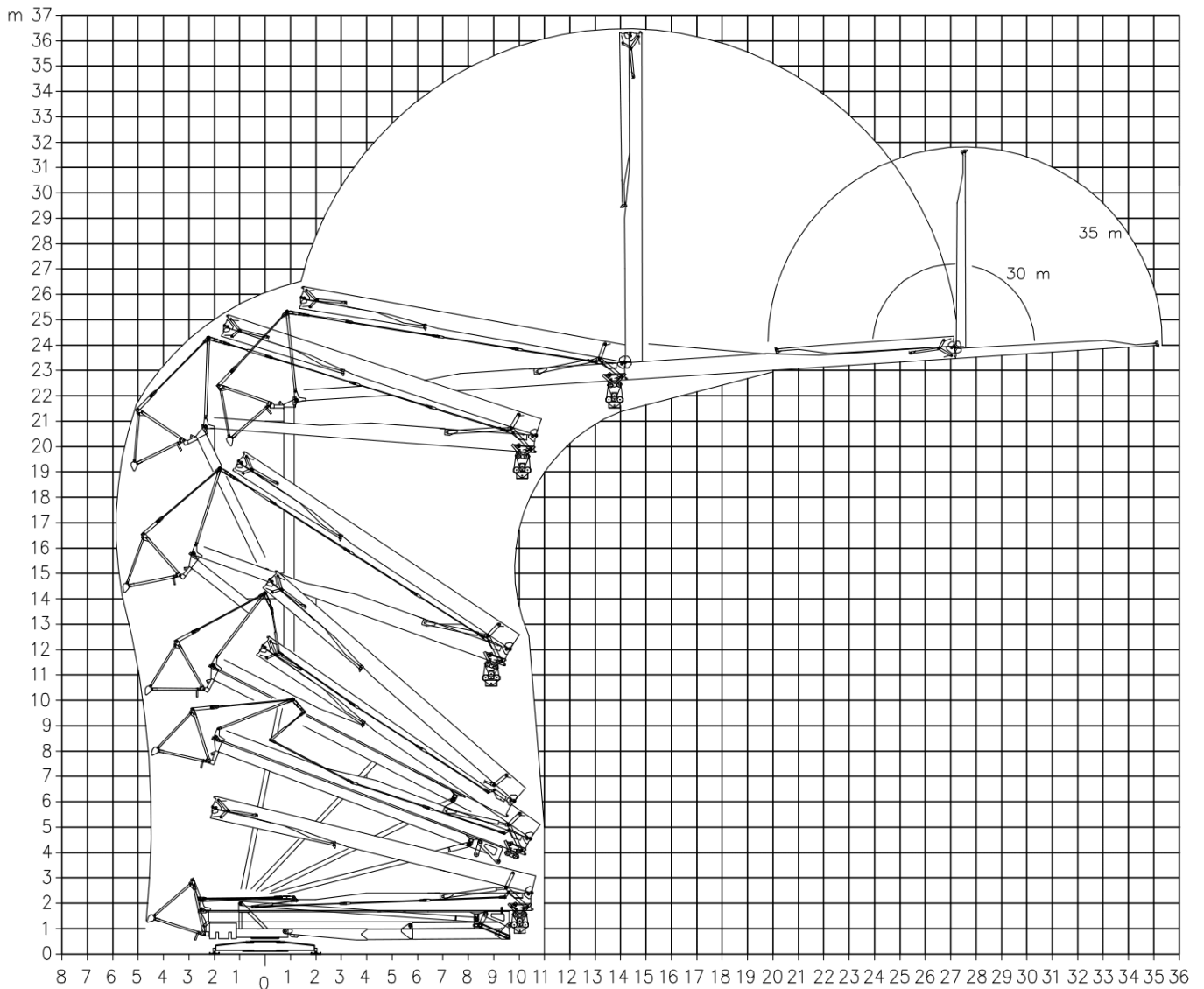
заказать:

+7 (495) 925-97-64

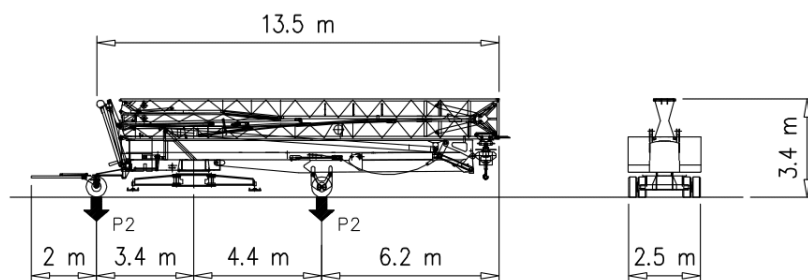
AFM Gru

1035 RVI

Montaggio – Montage – Erection – Montage – Montaje – Montagem



Trasporto – Transport – Transport – Transport – Transporte



P1	kg	9800
P2	kg	12380
Ptot	kg	22180


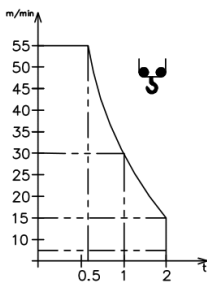
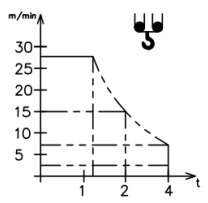
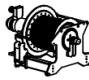


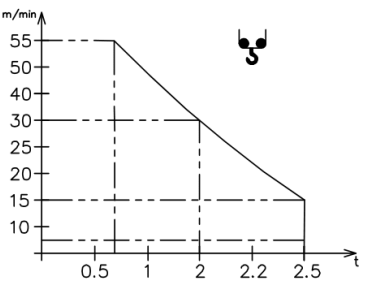
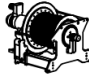
заказать:


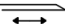




+7 (495) 925-97-64

AFM Gru

1035 RB1

Meccanismi – Mechanisms – Mécanismes – Antriebe – Mecanismos

V12.40 Sollevamento Hoisting Levage Heben Elevaciòn Elevaçao	m/min					 			
		4	15	30	55				
	t	2.0	2.0	1.0	0.6				
	m/min								
2		7.5	15	27.5					
t	4.0	4.0	2.0	1.2					
V15.45 Sollevamento Hoisting Levage Heben Elevaciòn Elevaçao	m/min								
		4	15	30	55				
	t	2.5	2.5	2.0	0.7				

Carrello Trolleying Distribuciòn			1a	0 → 45	m/min	2.2 kW / 3 kW
			2a			
			3a			
			1a	0 → 17	m/min	3 kW
			2a			
			3a			
	1a	0 → 17	m/min	3 kW		
	2a					
	3a					
Rotazione Slewing Orientaciòn			1a	0 → 0.8	giri/min tr/min rp/min	2.2 kW
			2a			
			3a			

Rete elettrica – Réseau – Mains supply – Netzstrom – Red	400V – 50 Hz
Potenza elettrica necessaria – Puissance électrique nécessaire Necessary electric power – Anschlusswert – Potencia electrica necesaria	V12.40 18 kVA V15.45 20 kVA
Conforme alla direttiva 2000/14/CE sul livello acustico Conforme à la directive 2000/14/CE sur le niveau acoustique In compliance with the 2000/14/CE instruction on noise level Germäss EWG-Richtlinie 2000/14/CE über Schall-Leistungspegel Conforme con la directiva 2000/14/CE sobre el nivel acustico	FEM 1.001–A3

 FMgru s.r.l. via Emilia 11–29010 Pontenure PC ITALY tel. 0523/510446 ric.aut. fax 0523/510365 www.fmgru.it e-mail: info@fmgru.com	
--	--



Documento commerciale non contrattuale
Per tutte le informazioni tecniche riferirsi
alle corrispondenti istruzioni

Unverbindliches Vertriebsdokument.
Für technische Informationen, siehe die
entsprechenden Anweisungen.

This commercial document is not legally
binding. For any technical information, please
refer to the corresponding instructions.

Documento comercial no contractual
Para cualquier información técnica,
ver la noticia correspondiente.

Code: 15ICA3780A0			
Ed.	Date	Rev	Date
1	05.06.03	2	19.03.10

ЗАКАЗАТЬ:

+7 (495) 925-97-64