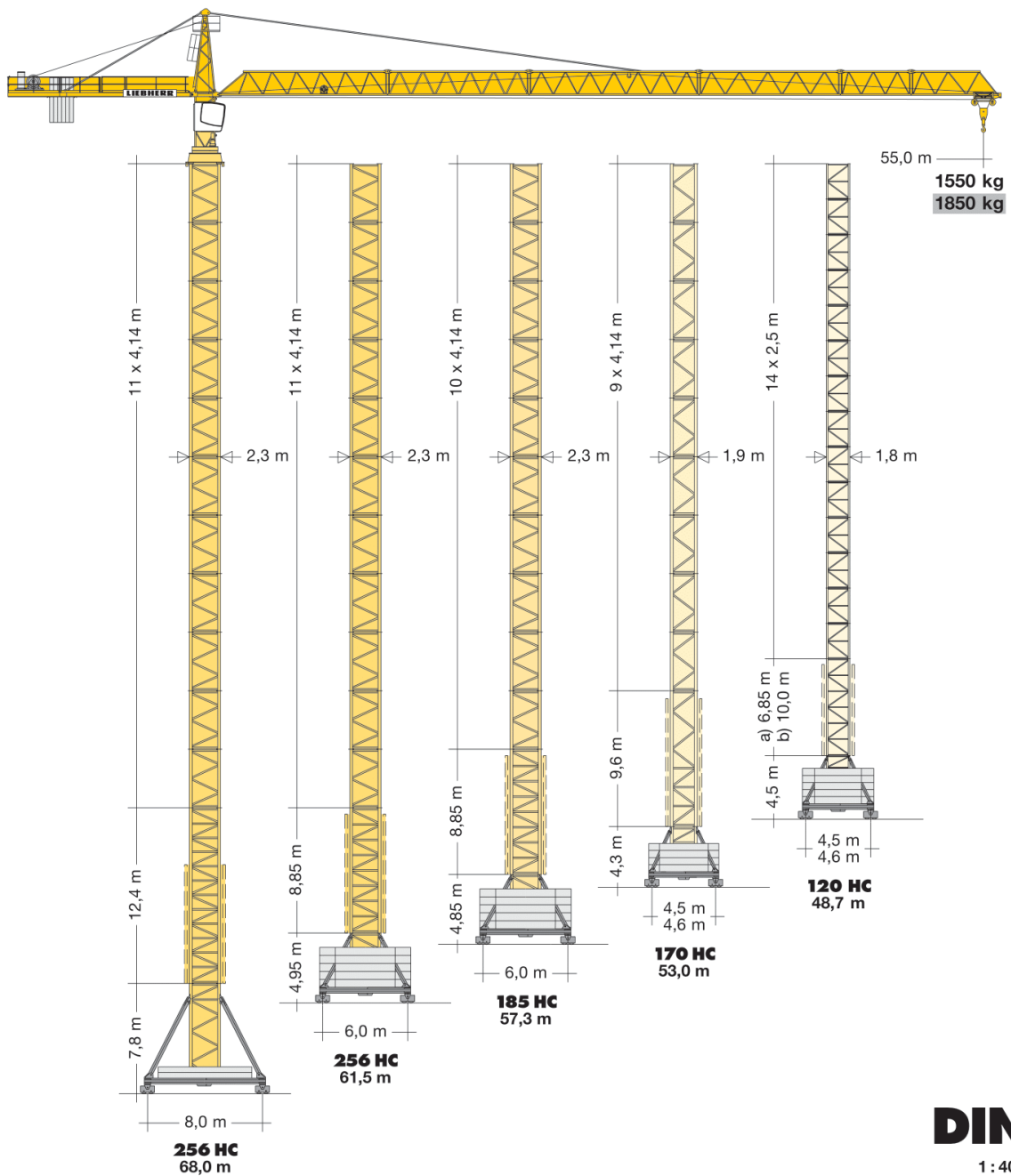


Turmdrehkran Tower Crane / Grue à tour / Gru a torre Grúa torre / Guindaste de torre

112 EC-H 8 FR.tronic®

112 EC-H 8 Litronic®

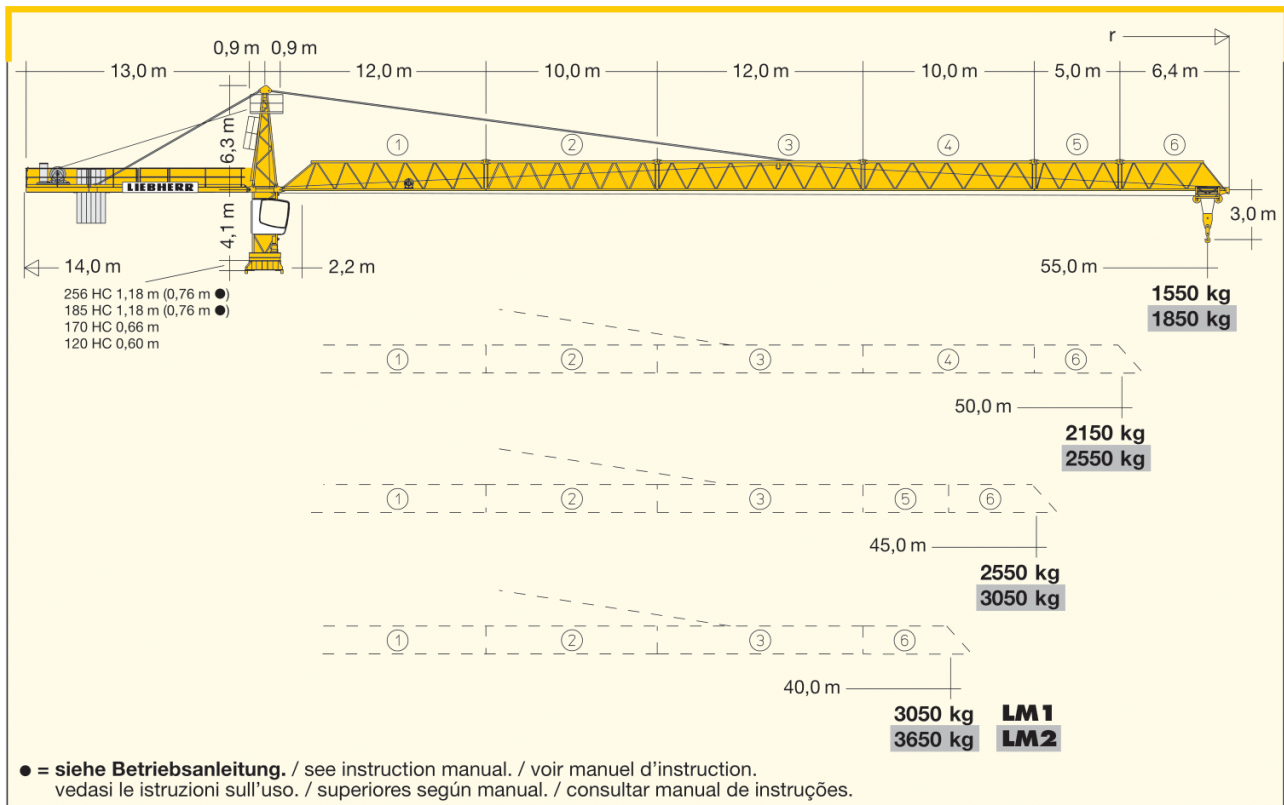


DIN

1 : 405

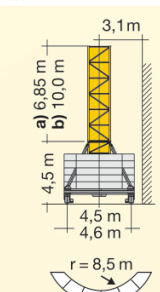
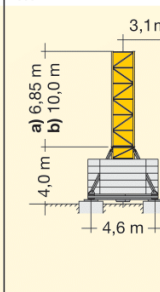
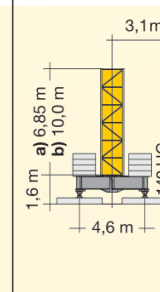
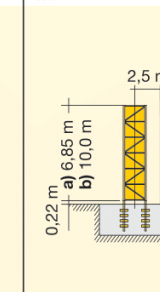
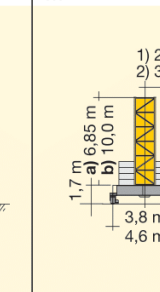
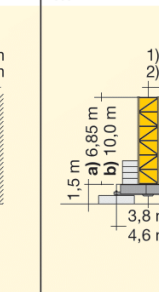
заказать:

+7 (495) 925-97-64



Hubhöhe

Hoisting height / Hauteur sous crochet / Altezza di sollevamento / Altura bajo gancho / Altura de montagem

		120 HC											
15	-	-	-	-	-	-	-	46,3*	-	-	-	-	-
14	48,0*	-	47,5*	-	45,1*	-	43,8*	-	-	-	-	-	-
13	45,5*	48,7*	45,0*	48,2*	42,6*	45,8*	41,3	44,5*	42,7*	-	42,5*	-	-
12	43,0	46,2*	42,5	45,7*	40,1	43,3*	38,8	42,0*	40,2*	43,4*	40,0*	43,2*	-
11	40,5	43,7	40,0	43,2	37,6	40,8	36,3	39,5	37,7	40,9*	37,5	40,7*	-
10	38,0	41,2	37,5	40,7	35,1	38,3	33,8	37,0	35,2	38,4	35,0	38,2	-
9	35,5	38,7	35,0	38,2	32,6	35,8	31,3	34,5	32,7	35,9	32,5	35,7	-
8	33,0	36,2	32,5	35,7	30,1	33,3	28,8	32,0	30,2	33,4	30,0	33,2	-
7	30,5	33,7	30,0	33,2	27,6	30,8	26,3	29,5	27,7	30,9	27,5	30,7	-
6	28,0	31,2	27,5	30,7	25,1	28,3	23,8	27,0	25,2	28,4	25,0	28,2	-
5	25,5	28,7	25,0	28,2	22,6	25,8	21,3	24,5	22,7	25,9	22,5	25,7	-
4	23,0	26,2	22,5	25,7	20,1	23,3	18,8	22,0	20,2	23,4	20,0	23,2	-
3	20,5	23,7	20,0	23,2	17,6	20,8	16,3	19,5	17,7	20,9	17,5	20,7	-
2	18,0	21,2	17,5	20,7	15,1	18,3	13,8	17,0	15,2	18,4	15,0	18,2	-
1	15,5	18,7	15,0	18,2	12,6	15,8	11,3	14,5	12,7	15,9	12,5	15,7	-
0	a) 13,0	b) 16,2	a) 12,5	b) 15,7	a) 10,1	b) 13,3	a) 8,8	b) 12,0	a) 10,2	b) 13,4	a) 10,0	b) 13,2	-
		m		m		m		m		m		m	
													

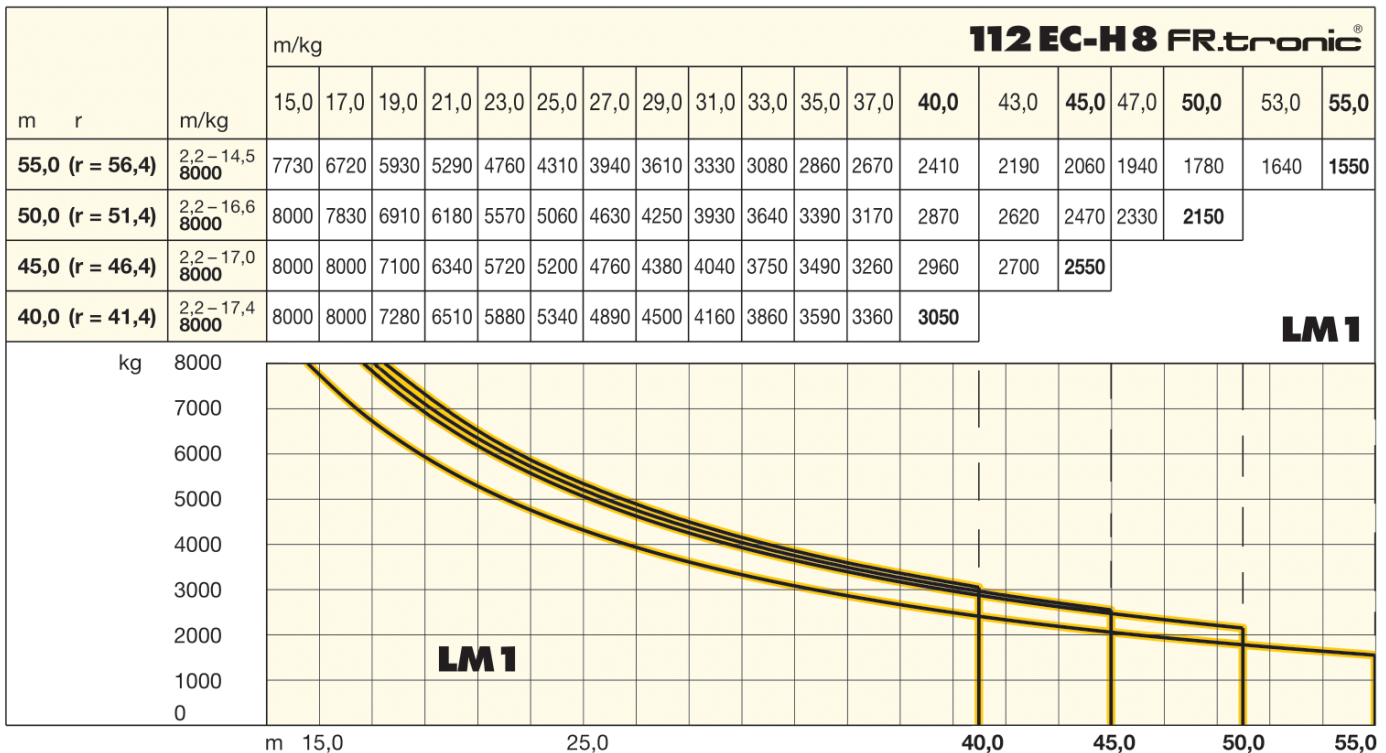
* Weitere Hubhöhen, Auslegerlängen sowie Klettern im Gebäude auf Anfrage. / Further hoist heights and jib lengths as well as climbing inside the building on request. / Autres hauteurs sous crochet et longueurs de flèche ainsi que hissage dans le bâtiment sur demande. / Ulteriori altezze gancho, lunghezze braccio così come telescopaggio all'interno dell'edificio: su richiesta. / Para alturas bajo gancho superiores, otros alcances y trepado en el interior del edificio, consultar. / Outras alturas de elevação, comprimentos de lança e subida no edifício: sob consulta.

заказать:

+7 (495) 925-97-64

Ausladung und Tragfähigkeit

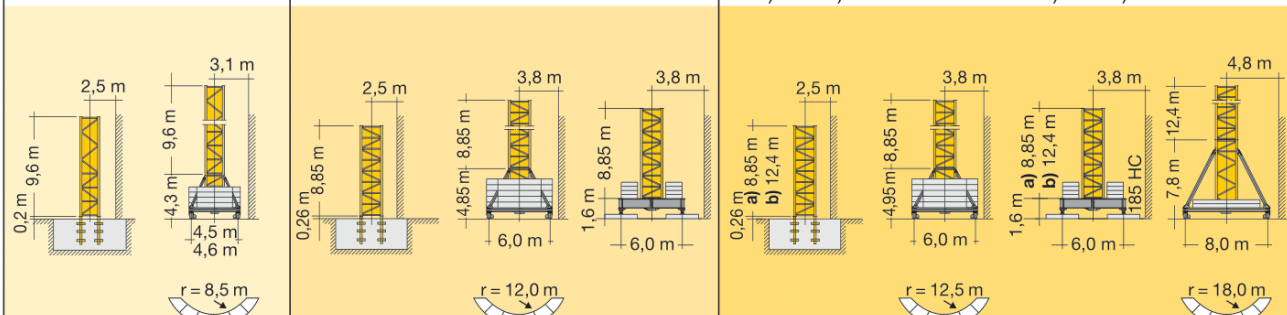
Radius and capacity / Portée et charge / Sbraccio e portata / Alcances y cargas / Alcance e capacidade de carga



Hubhöhe

Hoisting height / Hauteur sous crochet / Altezza di sollevamento / Altura bajo gancho / Altura de montagem

	170 HC		185 HC			256 HC				
12	-	-	-	-	-	-	64,6*	-	-	-
11	-	-	-	-	-	56,8*	60,4	61,5*	-	68,0*
10	53,0*	-	52,7*	57,3*	-	52,7	56,3	57,4	54,1*	57,7*
9	48,9*	53,0*	48,6	53,2	50,0*	48,5	52,2	53,3	50,0	53,6
8	44,7	48,9*	44,4	49,1	45,9	44,4	48,0	49,2	45,9	49,4
7	40,6	44,7	40,3	44,9	41,7	40,3	43,9	45,0	41,7	45,3
6	36,4	40,6	36,1	40,8	37,6	36,1	39,7	40,9	37,6	41,1
5	32,3	36,4	32,0	36,6	33,4	32,0	35,6	36,7	33,4	37,0
4	28,2	32,3	27,9	32,5	29,3	27,9	31,4	32,6	29,3	32,9
3	24,0	28,2	23,7	28,4	25,2	23,7	27,3	28,5	25,2	28,7
2	19,9	24,0	19,6	24,2	21,0	19,6	23,2	24,3	21,0	24,6
1	15,8	19,9	15,5	20,1	16,9	15,5	19,0	20,2	16,9	20,4
0	11,6	15,8	11,3	16,0	12,7	11,3	14,9	16,1	12,7	16,3

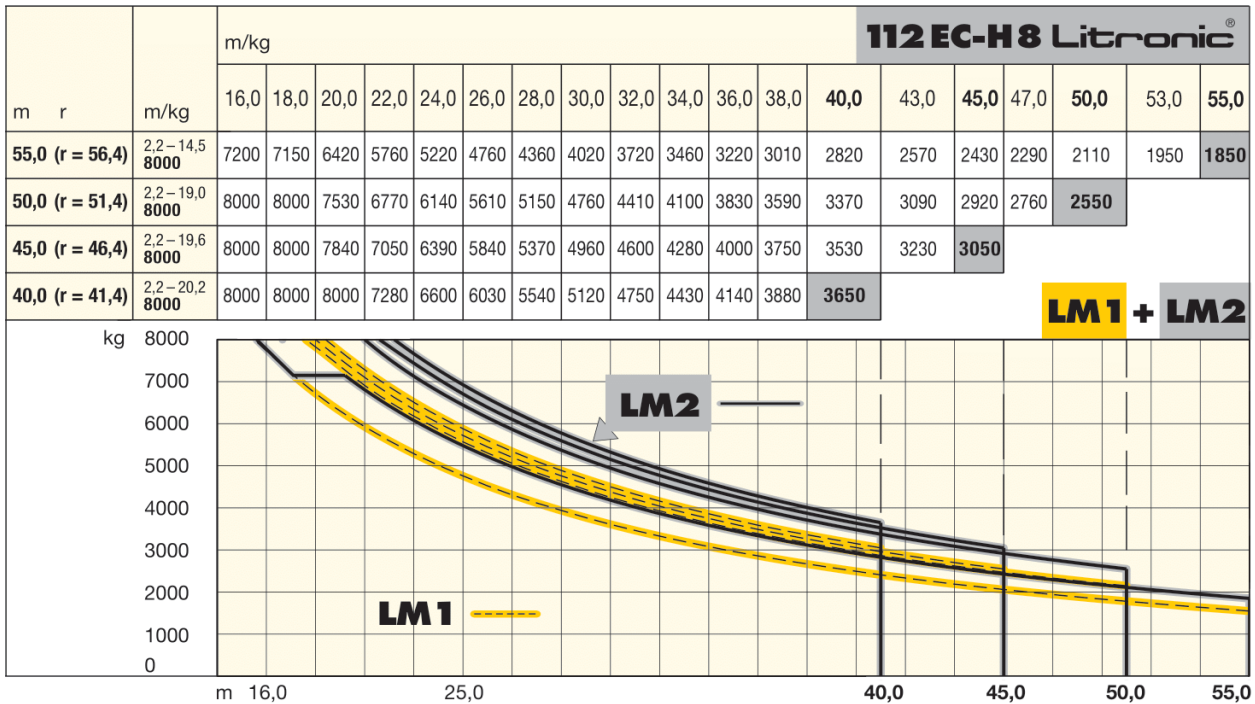


заказать:

+7 (495) 925-97-64

Ausladung und Tragfähigkeit

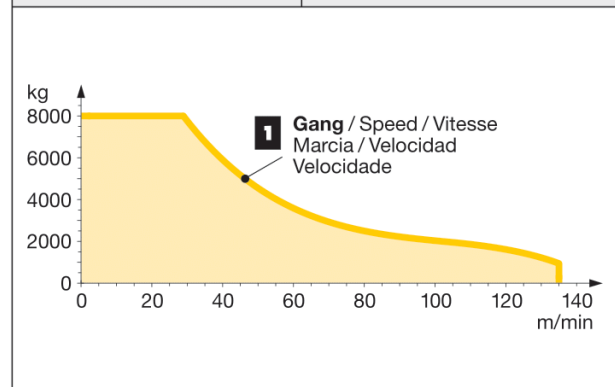
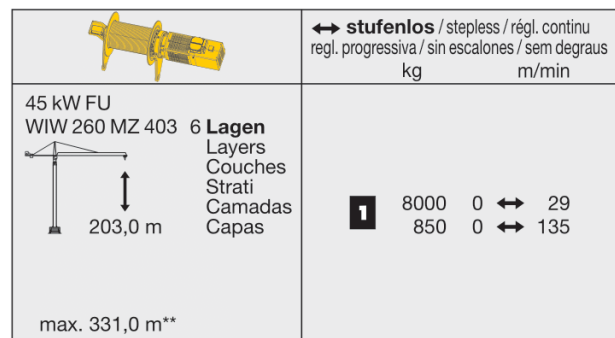
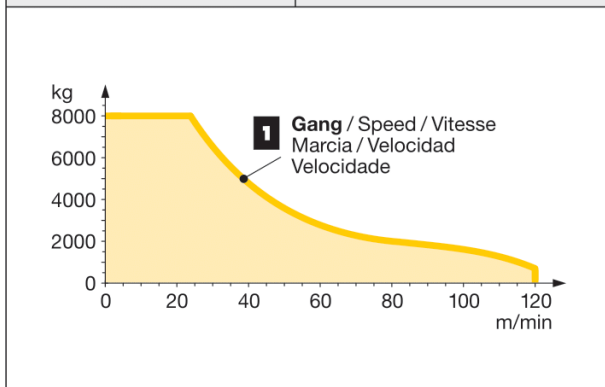
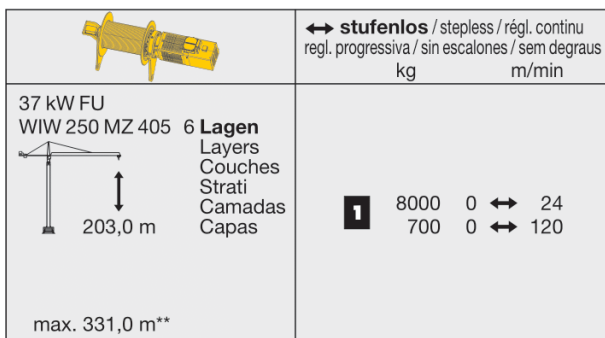
Radius and capacity / Portée et charge / Sbraccio e portata / Alcances y cargas / Alcance e capacidade de carga



LM1 + LM2

Antriebe FR.tronic®/Litronic®

Driving units / Mécanismes d'entraînement / Azionamenti / Mecanismos / Mecanismos






** Weitere Hublastdaten: siehe Betriebsanleitung. / Further hoist load data: see instruction manual. / Autres données de la charge de levage: voir manuel d'instruction. / Altri dati sui carichi sollevati: consultare il manuale d'istruzione. / Alturas bajo gráncho superiores según manual. / Outras tabelas de carga: consultar manual de instruções.


LM 2 Abweichende Geschwindigkeiten und Betriebsbedingungen. / Variant speeds and service conditions. / Vitesses et conditions de fonctionnement différentes. / Differenti velocità e condizioni di funzionamento. / Otras velocidades y características de funcionamiento. / Outras velocidades e características de funcionamento.

заказать:

+7 (495) 925-97-64

Antriebe FR.tronic®/Litronic® Driving units / Mécanismes d'entraînement / Azionamenti / Mecanismos / Mecanismos

	U/min 0 ↔ 0,8 sl./min tr./min	1 x 7,5 kW FU
	0 ↔ 100,0 m/min	5,5 kW FU
	25,0 m/min	2 x 4,0 kW (120 HC) 2 x 7,5 kW (256 HC) 2 x 5,5 kW (185 HC, 170 HC)

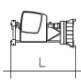
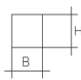
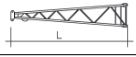
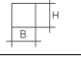

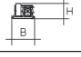

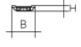

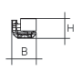
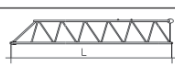
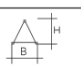
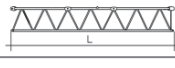
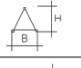



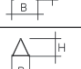

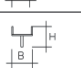
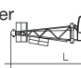
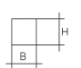
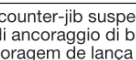
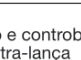
	37 kW FU	45 kW FU
	47,0	54,0

Litronic: kVA reduzierbar bei zu geringer Netz-Anschlussleistung, siehe BAL. / kVA can be reduced in case of too little power of the mains, see instruction manual. / kVA peut être réduit en cas de trop faible puissance du réseau, voir manuel d'instruction. / kVA riducibili in caso di potenza di rete ridotta (si veda manuale uso e manutenzione) / kVA variable para potencia de red demasiado pequeña, ver Manual de instrucciones. / kVA reduzível no caso de capacidade da rede elétrica muito baixa, ver manual de instruções.

Kolli-Liste





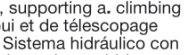






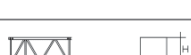
Packing List / Liste de colisage / Lista dei colli / Lista de contenido / Lista de embalagem

Montagegewichte: siehe Betriebsanleitung. / Erection weights: see instruction manual. / Poids de montage: voir manuel de service. / Pesos de montaje: vézase las instrucciones sull'uso. / Peso para el montaje: según manual. / Pesos de montagem: vejã-se as instruções p. uso.

Kranoberteil		Upper part of crane / Partie supérieure de grue / Parte superiore della gru / Parte superior grúa / Parte superior do guindaste	L (m)	B (m)	H (m)	kg*		
Pos. Item Rep. Voce Pos. Cant. Ref.	Anz. Qty. Qte. Qta. Cant. Cant.	Kabine mit Drehbühne / Cabin with slewing platform Cabine avec ensemble mât-cabine / Cabina con piattaforma girevole / Plataforma de giro Cabina com plataforma giratório			120 HC 5,15 170 HC 5,20 185 HC 6,00 256 HC 6,00	2,44 2,45 2,74 2,74	2,48 2,65 2,65 2,65	6900 7200 7500 7500
1	1							
2	1	Turmspitze / Tower head section Porte-flèche / Testa porta-braccio Cabeza de torre / Cabeça de apoio de lança			6,20	1,46	1,70	1470
3	1	Hubwerkseinheit 37 kW / Hoist gear unit / Treuil de levage / Gruppo meccanismo sollevamento / Mecanismo de elevación / Grupo de mecanismo elevatório			2,34	2,20	1,70	2600
4	1	Gegenausleger / Counter-jib Contre-flèche / Controbraccio Contrapluma / Contra-lança			13,11	2,42	0,57	2700
5	1	Gegenausleger mit Hubwerkseinheit Counter-jib with hoist gear unit / Contre-flèche avec treuil de levage / Controbraccio con gruppo meccanismo sollevamento / Contrapluma con mecanismo de elevación / Contra-lança com grupo de mecanismo elevatório			13,11	2,42	2,20	7000
6	1	Ausleger-Anlenkstück / Jib heel section Pied de flèche / Setto articolato di braccio Pluma tramo primero / Base articulada de lança			12,24	1,58	1,79	① 1970
7	1	Ausleger-Zwischenstück / Intermediate jib section Elément intermédiaire de flèche / Spezzone di braccio Tramo intermedio pluma / Peça suplementar da lança			12,30	1,25	1,70	③ 1380
8	2	Ausleger-Zwischenstück / Intermediate jib section Elément intermédiaire de flèche / Spezzone di braccio Tramo intermedio pluma / Peça suplementar da lança			10,30	1,25	1,70	② 1125 ④ 800
9	1	Ausleger-Zwischenstück / Intermediate jib section Elément intermédiaire de flèche / Spezzone di braccio Tramo intermedio pluma / Peça suplementar da lança			5,25	1,25	1,68	⑤ 370
10	1	Ausleger-Kopfstück / Jib head section Pointe de flèche / Punta freccia Tramo punta de pluma / Cabeça de lança			6,51	1,43	1,88	⑥ 420
11	1	Laufkatze und Lasthaken / Trolley and hook Chariot de distribution et crochet / Carrello con gancio Carrito y gancho / Carro de ponte e gancho			1,90	1,42	1,38	750
12	1	Drehbühne und Turmspitze / Slewing platform and tower head section / Ensemble mât-cabine et porte-flèche Piattaforma girevole e cuspid / Plataforma de giro y cabeza torre / Plataforma giratória e cabeça de torre			120 HC 11,20 170 HC 11,20 185 HC 11,70 256 HC 11,70	2,45 2,45 2,74 2,74	2,62 2,62 2,65 2,65	8370 8670 8970 8970
13	1	Ausleger- und Gegenausleger-Abspannung / Jib and counter-jib suspension Haubanage de flèche et de contre-flèche / Attrezzatura di ancoraggio di braccio e controbraccio Tirantes de sost en pluma y contrapluma / Grupo de ancoragem de lança e contra-lança			8,20 5,87	0,55 0,20	0,12 0,16	915 170

ЗАКАЗАТЬ:

+7 (495) 925-97-64

Pos. Item Rep. Pos. Ref.	Anz. Qty. Qte. Cant. Cant.				L (m)	B (m)	H (m)	kg*
Turm Tower / Mât / Torre Torre / Torre								
14	15	Turmstück / Tower section			120 HC 2,50	1,80	1,80	1090
	10	Élément de mât / Elemento di torre			170 HC 4,14	1,90	1,90	1850
	10	Tramo torre / Torre			185 HC 4,14	2,30	2,30	2240
	12				256 HC 4,14	2,30	2,30	2300
15	7	Turmstück lang / Long tower section			120 HC 5,00	1,80	1,80	1830
	3	Élément de mât long / Elemento di torre, lungo			120 HC 10,00	1,80	1,80	3430
		Tramo de torre largo / Peça de torre, comprida			120 HC 12,50	1,80	1,80	4200
16	1	Grundturmstück / Base tower section			120 HC 6,85	1,80	1,80	2610
		Mât de base / Elemento di torre base			120 HC 10,00	1,80	1,80	3530
		Tramo base / Peça de base de torre			170 HC 9,60	1,90	1,90	4480
					185 HC 8,85	2,30	2,30	4280
					256 HC 8,85 (12,42)	2,30 (2,30)	2,30 (2,30)	4830 (7940)
Klettereinrichtung Climbing equipment / Equipement de télescopage / Attrezzatura per allungamento della gru Equipo de trepado / Acesórios p. subida no edificio								
17	1	Führungsstück kpl. / Guide section cpl. / Cage télescopique cpl. / Gabbia di sopraelevazione compl. Torre de montaje completa / Peça de guia compl.			120 HC 6,45	2,10	2,42	3500
					120 HC 9,60	2,10	2,42	4440
					170 HC 9,04	2,31	2,28	4380
					185 HC 8,39	2,68	2,58 (3,04)	5200
					256 HC 8,39	2,68	2,58 (3,04)	5200
18	1	Hydraulikanlage, Stütz- u. Klettertraverse / Hydraulic unit, supporting a. climbing cross members / Système hydraulique avec traverses d'appui et de télescopage Sistema idraulico, traversa di appoggio e allungamento gru / Sistema hidráulico con travessa de apoio y trepado / Instalação hidráulica, travessa de apoio e subida			120 HC 2,87	2,12	1,06	1050
					170 HC 2,00	1,10	1,00	1100
					185 HC 2,30	1,25	1,00	1150
					256 HC 2,30	1,25	1,00	1150
Unterwagen Undercarriage / Châssis / Carro della gru Carro con mástil / Carro de guindaste								
19	2	Fahrschemel mit Antrieb / Rail bogie with drive Bogie moteur / Telaio con gruppo propulsore Caja rodillo motriz / Quadro sem grupo de propulsão			120 HC 1,38	0,88	0,87	900
					170 HC 1,46	0,84	0,87	920
					185 HC 1,46	0,84	0,87	920
					256 HC 1,63 (1,46)	0,92 (0,84)	0,95 (0,87)	1690 (920)
20	2	Fahrschemel ohne Antrieb / Rail bogie without drive Bogie fou / Telaio senza gruppo propulsore / Caja rodillo conducido / Quadro con grupo de propulsão			120 HC 1,17	0,60	0,87	860
					170 HC 1,15	0,60	0,87	880
					185 HC 1,15	0,60	0,87	880
					256 HC 1,37 (1,15)	0,62 (0,60)	0,95 (0,87)	1340 (880)
21	1	Tragholm lang / Long support arm Longeron long / Longherone lungo Braço soporte largo / Travessa comprida			120 HC 7,12	0,78	0,65	950
					170 HC 7,15	0,80	0,70	1070
					185 HC 9,10	0,82	0,74	1350
					256 HC 9,10 (11,95)	0,80 (0,82)	0,80 (0,80)	1650 (2200)
22	2	Tragholm kurz / Short support arm Longeron court / Longherone corto Braço soporte corto / Travessa curta			120 HC 3,45	0,56	0,55	408
					170 HC 3,45	0,60	0,70	500
					185 HC 4,41	0,62	0,71	615
					256 HC 4,45 (5,58)	0,77 (0,65)	0,77 (0,77)	800 (1035)
23	2 + 2	Randträger / Border support Traverse / Supporti base Traviesa / Apoio de bordo			120 HC 4,02	0,35	0,12	95
					170 HC 4,08 - 4,30	0,16 - 0,33	0,11 - 0,14	80 - 200
					185 HC 5,48 - 5,46	0,11 - 0,17	0,16 - 0,38	118 - 454
					256 HC 5,46 - 5,40	0,11 - 0,18	0,16 - 0,38	175 - 525
					(7,52 - 7,46)	(0,10 - 0,17)	(0,10 - 0,38)	(366 - 912)
24	4	Stützholm / Support strut Hauban de châssis / Correnti di appoggio Tirante vertical / Travessa de apoio			120 HC 3,78	0,15	0,22	200
					170 HC 3,53	0,25	0,17	240
					185 HC 4,23	0,17	0,25	275
					256 HC 4,14 (6,55)	0,18 (0,22)	0,25 (0,25)	320 (600)
25	1	Unterwagen-Turmstück / Undercarriage tower section Mât de châssis / Elemento di torre del carro Tramo de carro / Peça de torre do chassis			120 HC 3,50	2,06	2,06	1320
					170 HC 3,30	2,15	2,15	2000
					185 HC 3,73	2,52	2,52	1950
					256 HC 3,73 (6,70)	2,62 (2,53)	2,62 (2,53)	2550 (3800)
26	1	Stapel Aufstiege und Podeste / Bundle of ladders and platforms Faisceau d'échelles et de plates-formes / Serie di scale e rampe Paquete de escaleras y plataformas / Escadas e patamares			120 HC 3,50	1,20	1,00	1000
27	1	Kiste mit Kleinteilen / Crate with small parts Caisse contenant des accessoires / Cassa con accessori Caja con accesorios / Caixa de acessórios			2,00	1,00	1,00	2000

() **Angaben in Klammern gelten für 8 m-Unterwagen.** / The data in brackets are valid for an undercarriage of 8 m. / Les données techniques indiquées entre parenthèses sont valables pour un châssis de 8 m. / Caratteristiche in (...) valgono per carro di 8 m. / Los datos entre paréntesis son válidos para carro de 8 m. Características em (...) válidas pelo chassis de 8 m.

* **Einzelgewichte.** / Single weights. / Poids individuels. / Pesì di componenti. / Pesos unitarios. / Pesos de peças componentes.